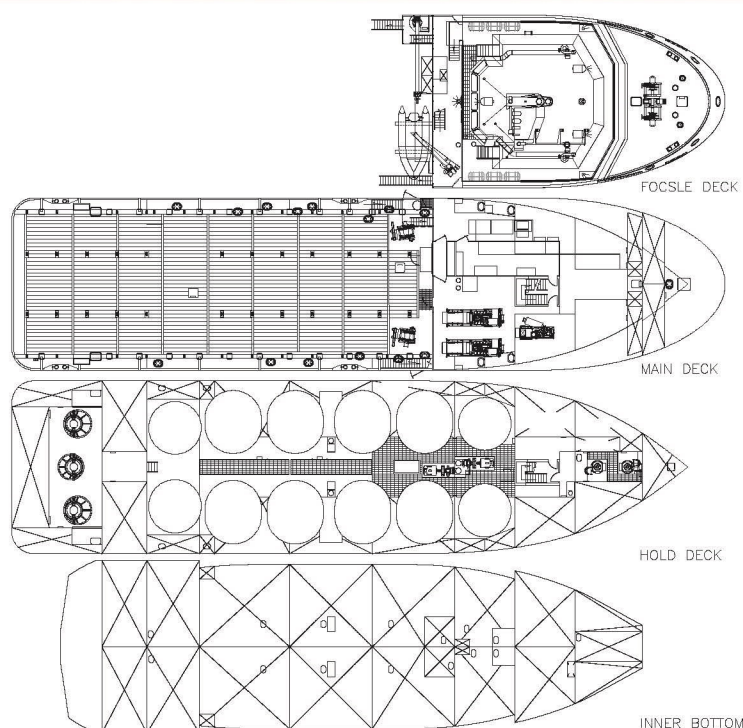




PSV is a state of the art platform supply vessel. Equipped with Diesel Electric propulsion, three main engine configuration, triple stern L-drives, two bow thrusters, and Dynamic Positioning Class II (DP II), the vessel is extremely maneuverable and capable of precise station keeping while in DP mode while also making operations extremely safe and reliable.

The main engines of the have been moved to the main deck level as opposed to below deck as is the case with a traditional PSV. This unique propulsion configuration allows 30% more below deck cargo capacity as compared to a traditional PSV.



## REGISTRATION

Type: **PSV**

Builder: **Dayang Shipyard - China**

Class: **ABS + A1 Offshore support vessel, AMS, DPS-2, Fi-fi 1(E),**

Flag: **Vanuatu**

PLATFORM SUPPLY VESSEL

## ■ MAIN PARTICULARS

### DIMENSIONS

Length overall:.....57.90 m  
 Breadth moulded:.....14.00 m  
 Depth:.....5.50 m  
 Max Draft:.....4.90 m  
 Deadweight:.....1,509 mt  
 Gross tonnage:.....1,517

### CAPACITIES

Deck area: (5 mt/m<sup>2</sup>).....(31,50x11,40 m ) 360 m<sup>2</sup>  
 Max Deck cargo:.....Approx 600 mt  
 Fuel oil:.....537 m<sup>3</sup>  
 Drill water:.....410 m<sup>3</sup>  
 Fresh water:.....386 m<sup>3</sup>  
 Liquid product tanks: .....(Mud/Brine/Base oil/Drill water)  
 .....(8 tanks) Total: (4075 barrels) 648 m<sup>3</sup>  
 Dry Bulk/Cement: .....(4 tanks) Total: (5500/6000 cft) 156/170 m<sup>3</sup>  
 Foam:.....21 m<sup>3</sup>

### DELIVERY RATES

Fuel oil:.....150 m<sup>3</sup>/h at 60 m  
 Fresh water:.....150 m<sup>3</sup>/h at 60 m  
 Drill water/ballast:.....150 m<sup>3</sup>/h at 60 m  
 Bulk material: :.....50 mt/h at 60 m  
 Liquid mud:.....2 x 150 m<sup>3</sup>/h at 60 m  
 Liquid mud tanks fitted with agitators and fixed washing system.

### ACCOMMODATIONS

Accommodations for:.....22 pers.  
 Single cabins:.....4  
 2 man cabins:.....5  
 4 man cabins:.....2  
 Mess room:.....1  
 Day rooms:.....2  
 Fully air-conditioned.

## ■ MACHINERY / PERFORMANCE

### PROPULSION - MACHINERY

Main generators: .....2 x 1,290 kW + 1x 485 kW.  
 Main propulsion: .....2 x 843 kW azimuth + 1 x 843 kW fixed pitch.  
 Bow thrusters:.....2x 560 kW  
 Emergency generator:.....112 kW

### SPEED / CONSUMPTION

Maximum speed (100%):.....12,2 t/24h at 12.5 knots  
 Service Speed (80%):.....8.7 t/24 h at 11.5 knots  
 Economical Speed (50%):.....6.8 t/24 h at 10.5 knots

## ■ EQUIPMENT & ELECTRONICS

### DECK EQUIPMENT

Tuggers:.....2 x 10 mt pull  
 Deck provisions crane:.....1 mt @10 m

### SAFETY EQUIPMENT

Fire Fighting (Fifi 1) - 2 pumps x1,600 m<sup>3</sup>/h, 2 monitors x1,200 m<sup>3</sup>.  
 Foam  
 Water spray protection  
 Alarm, monitoring and control system for periodically  
 unattended machinery space.  
 Life saving arrangement.  
 1 MOB boat with davit.

### DYNAMIC POSITIONING SYSTEM

Type:.....Class DP2  
 2 operationg consoles,  
 2 DGPS,  
 1 laser reference unit,  
 1 independent joystic system  
 Sensors and monitoring as per class II requirements.

### ELECTRONICS

#### - NAVIGATION

2 radars with ARPA, 2 radars transponders,  
 2 gyrocompasses, 1 echo sounder,  
 1 speed log, 1 autopilot

#### - COMMUNICATION

1 radio system compliant with GMDSSA3 rules.  
 1 Inmarsat, Vsat

### DP CAPABILITY PLOT

(All thrusters 100%)  
 Max wind speed: 50 Kts

